

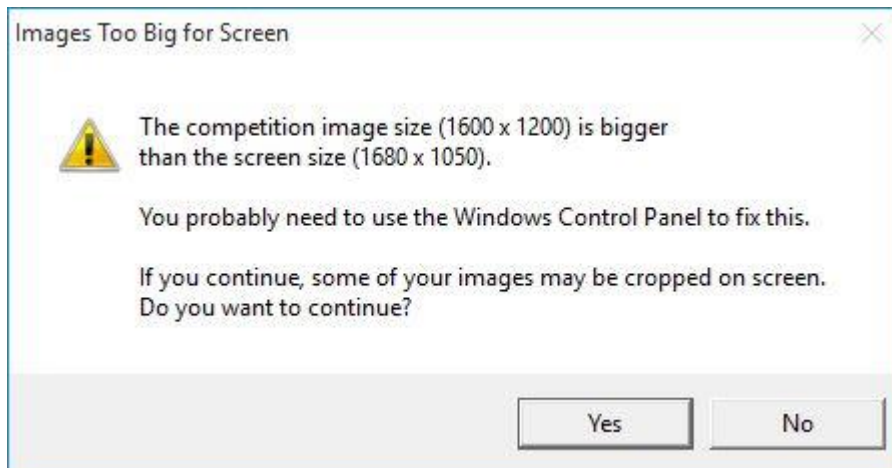


DiCentra FAQs – 1

Updated 22nd August 2016

Images Too Big for Screen

Question: When I start my competition I get a box saying “Images Too Big for Screen”, shown below. How do I fix this?

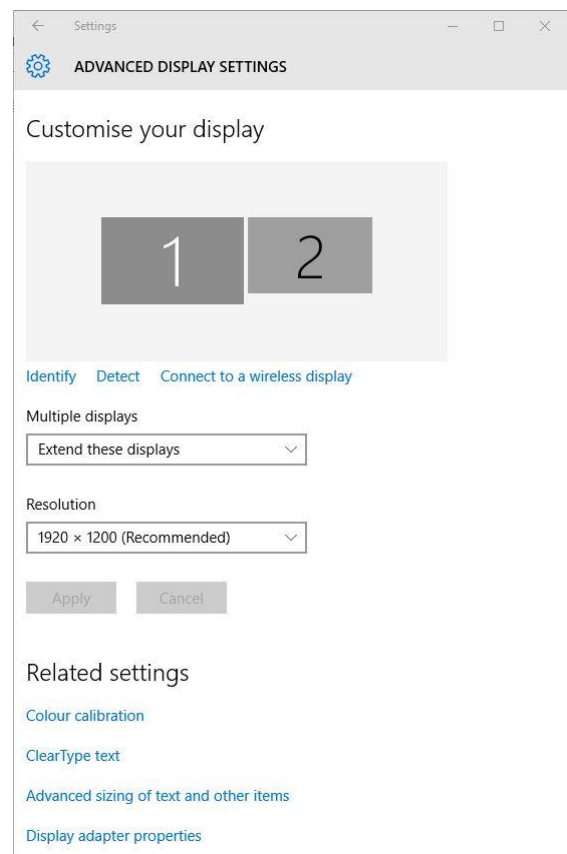


Answer 1: In the simplest case, your projector resolution setting is too small for the competition and needs to be changed. Often this problem can be avoided by connecting the projector to your laptop before switching them on and then switching the projector on first.

If this does not work, try the following.

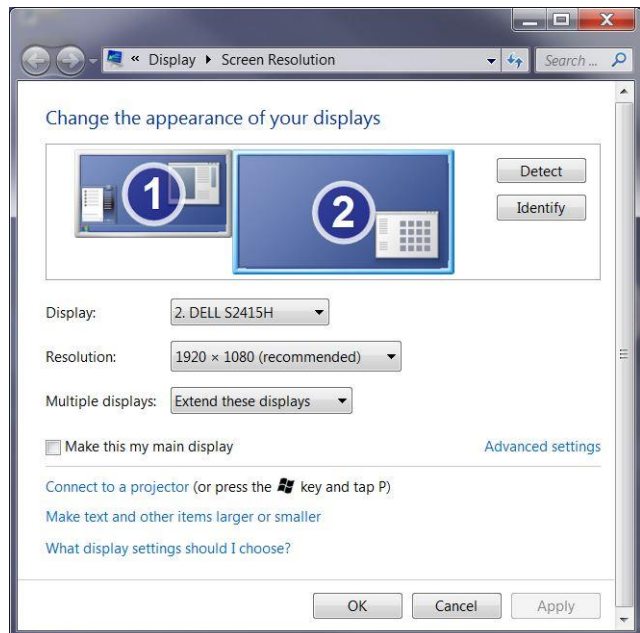
Windows 8 and 10:

1. Use the Search charm (W8) or Search on the Start Menu (W10) and type in “resolution”
2. Select the resulting *Change the screen resolution* item and a form will appear (similar to the one on the right).
3. Under *Multiple Displays*, select *Extend these Displays* or *Show only on 2*, where 2 is the projector.
4. Select the projector screen (2) and the required resolution. *Apply*.
5. If the resulting screen appears to be the wrong shape or over- or under-sized you will need to use your projector’s menu to adjust the projector resolution to the same as you selected in Windows.



Windows 7:

1. Use Search on the Start Menu and type in “resolution”
2. Select the resulting *Adjust screen resolution* item and a form will appear (similar to the one on the right).
3. Under *Multiple Displays*, select *Extend these Displays* or *Show only on 2*, where 2 is the projector.
4. Select the projector screen (2) and the required resolution. *Apply*.
5. If the resulting screen appears to be the wrong shape or over- or under-sized you will need to use your projector’s menu to adjust the projector resolution to the same as you selected in Windows.



Answer 2: If you have the laptop showing the same information on the laptop screen and the projector, then the effective screen size is the smaller of the laptop and projector pixel dimensions. Often this is the laptop’s screen size and it is probably too small for your competition. For example, a laptop screen 1366 px wide x 768 px high and a projector native size 1920 px wide x 1080 px high will project at 1366 px wide x 768 px high.

1. Use the steps in Answer 1 and select *Show only on 2* at step 3.
 2. The laptop screen will go blank and the desktop will only appear on the projector.
-
1. Alternatively, select *Extend these Displays* if you want to use DiCentra 4.6 or later in dual screen mode.
-
1. **Shortcut:** On most laptops, without using the control panel, you can just use the **Win+P** keyboard combination to cycle round the display options until you find the one you want.
 2. Then hit *Enter*.

More below ...

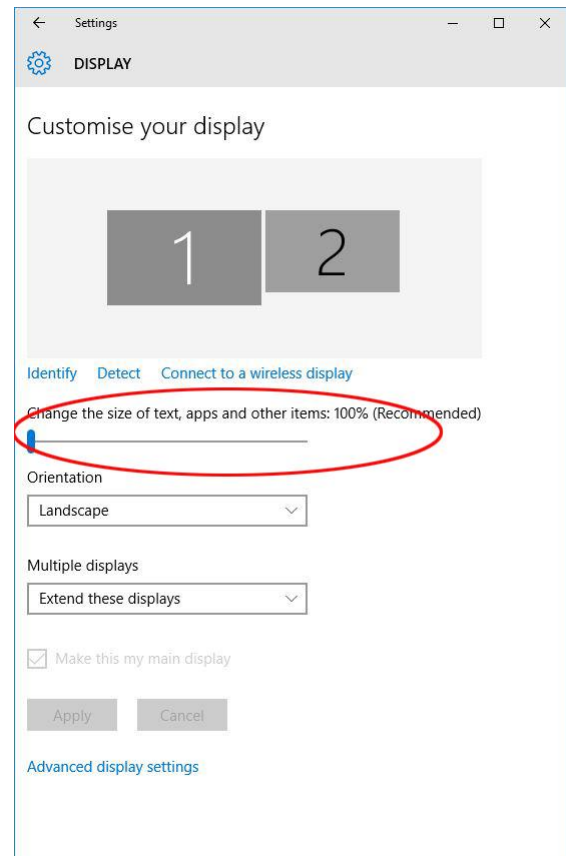
Answer 3: In order to adjust the font size on screen, some laptops (and Windows 10) “fake” the screen size to achieve font scaling. For example, to achieve 125% scaling of the fonts to make them more legible, the effective screen size is reduced to 80% of its actual pixel dimensions. To fix this you need to set the font size back to 100% for the projector screen or (better) disable font scaling for DiCentra.

Projector font scaling

Windows 8 and 10:

1. **Right-click** on a blank area of the Windows desktop and select **Display Settings**.
2. A form similar to the one shown will appear.
3. Select the projector screen (2).
4. Move the slider that is under the **Change the size of text ...** label to the far left (100%).
5. **Apply**.

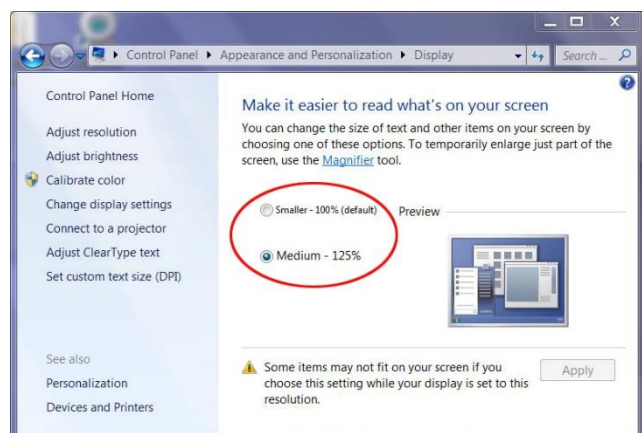
Note: On Windows 8/10 text scaling can be different on your two screens so ensure you select the projector screen before changing scaling and applying.



Windows 7:

1. **Right-click** on a blank area of the Windows desktop and select **Personalize**.
2. Then **click** on **Display** on the left hand panel.
3. A form similar to the one shown will appear.
4. Select the **Smaller – 100%** setting
5. **Apply**.

Note: On Windows 7 text scaling applies identically to all screens.



Disabling Font Scaling Just for DiCentra

1. Right-click on the icon you use to launch DiCentra
2. Select **Properties > Compatibility**
3. Select **Disable display scaling on high DPI settings** and click **Apply**.